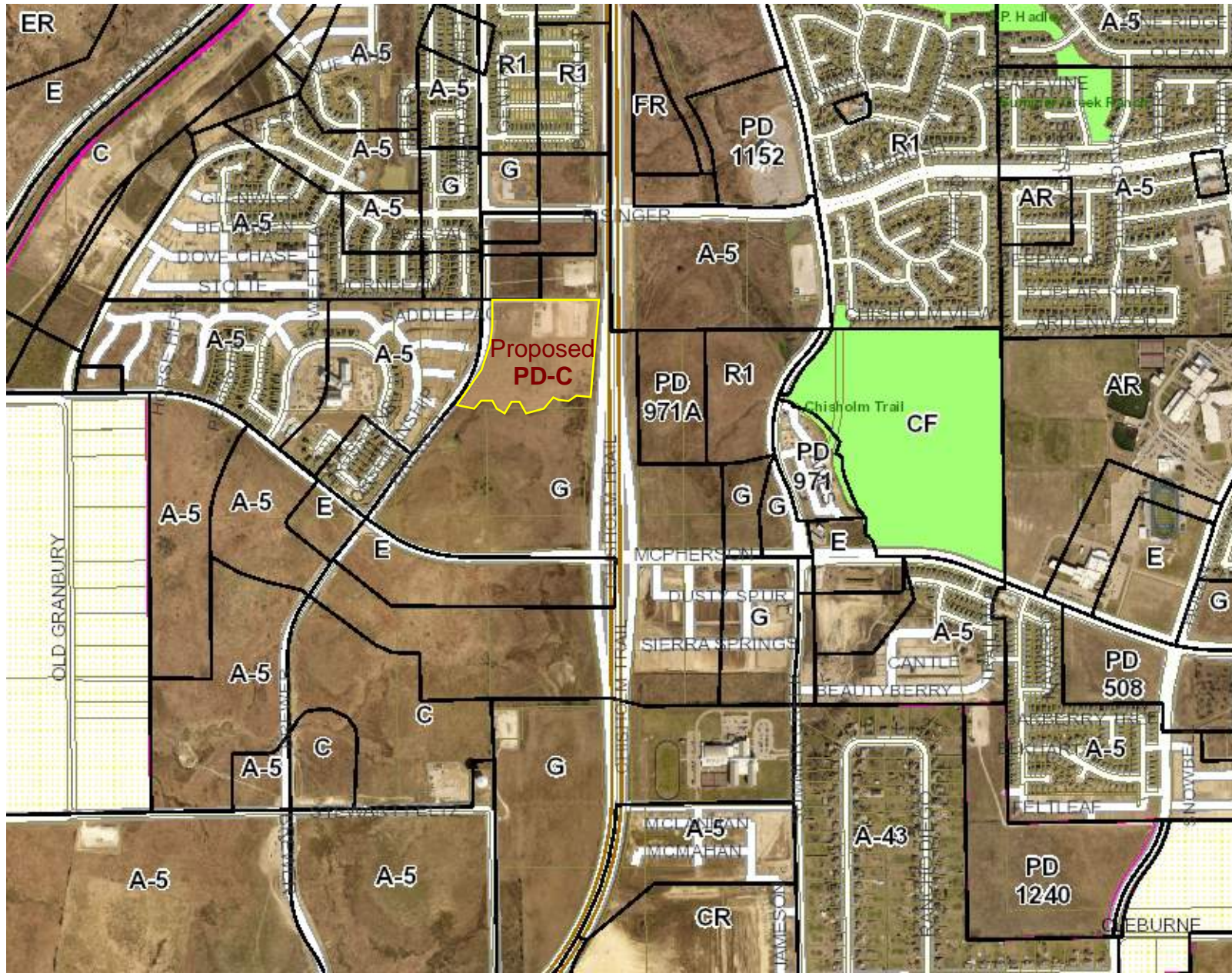


ZC-20-001 Area Zoning Map Aerial



Legend

- Zoning Outline
- Overlay Districts
 - <Null>
 - 21047
 - AO
 - APZ 1
 - APZ 2
 - CIRCLE PARK
 - CZ
 - DOWNTOWN URBAN
 - I-35W CENTRAL
 - I-35W NORTH
 - I-35W SOUTH
 - TCU
 - TUP 1
 - TUP 2
 - TUP 3
 - TUP 4
 - TUP 5
 - TUP 6
 - TUP 7
- PARCELS
- Arterials
- Freeways
- Streets
- Tarrant County Streets
- Parks
- Lakes
- City Limit Annexation History
- City Limit
- Extraterritorial Jurisdiction (ETJ)
- ☑ Conditional Use Permits



12/20/19 3:31 PM

0.5 0 0.26 0.5 Miles

This product is for informational purposes and may not have been prepared for or be suitable for legal, engineering, or surveying purposes. The City of Fort Worth assumes no responsibility for the accuracy of said data.

NCTCOG ORTHOPHOTOGRAPHY

1: 16,740

