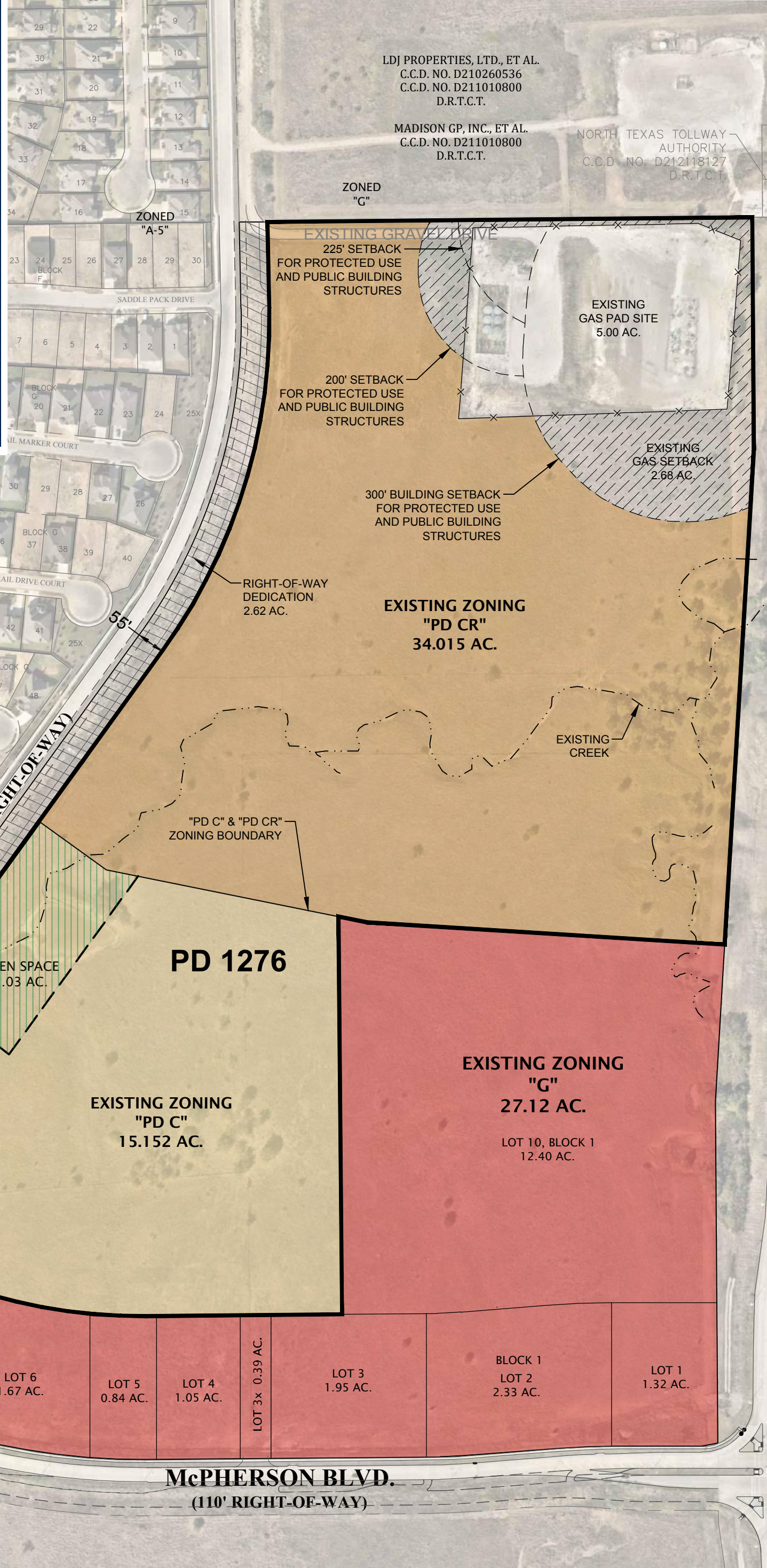


LEGEND:

- PD 1276 Zoning Boundary
- "G" Commercial
- "PD-C" Multi-Family Residential
- "PD-CR" Multi-Family Residential
- Open Space
- Future R.O.W. Dedication
- Gas Well Setback

TRACT ACREAGE:

PD 1276	49.167
"PD CR"	34.015
"PD C"	15.152
SOUTH TRACT	
"G" COMMERCIAL	27.12
FUTURE R.O.W. DEDICATION	2.62
CHISHOLM TRAIL WEST	78.907 AC.



NORTHWEST CORNER OF
CHISHOLM TRAIL PRKWY. & McPHERSON BLVD.
FORT WORTH, TX
January 28, 2021

**CHISHOLM TRAIL WEST
EXISTING ZONING EXHIBIT
78.907 ACRES**

